



2019 Collection



# Norlender Knitwear

Norlender Knitwear's story goes back to 1927, when the founder, Ola Tveiten, bought his first knitting machine. Mr. Tveiten lived with his family on a mountain farm on the island Osterøy. With no road leading up to the farm, the big knitting machine was brought up on a horse sledge assisted by many helpful neighbours. Ola Tveiten was a carpenter, and when the machine was installed in the basement of the farmhouse, he had to leave for work in Bergen. «You just have to make it work», he told his teenage sons, and left. Together with their mother, Anna Maria Tveiten, the sons made the machine work and started producing underwear for women under the name «Svale trikotasje».

The business went well, and very soon they had to invest in a second knitting machine and industrial sewing machines. Eventually the factory outgrew the small space in the basement and the family built the first factory building next to the old farmhouse. The dark years during WWII and the occupation of Norway were times with very limited resources. It was hard to get knitting yarn and what was available was a strange mix of cotton and other replacement fibers. Everything that was produced had to be shared very carefully between customers.

The war ended and Europe and Norway eventually got back to normal. The business was good, people needed clothes and the prospects were bright. However, times were changing and it was difficult to foresee the big changes which took place when the low price products from the far east swept into the Scandinavian market. At Svale Trikotasje they struggled to stay in business, and felt that it was time for some vital changes. In the winter of 1989 the third generation of the Tveiten family took over the company. They reinvested in new machinery which enabled a wider range of knitwear production and started producing cardigans and pullovers based on the Norwegian knitting heritage under a new label Norlender.

## OUR TRADITIONS

Wool plays an important role in the Norwegian heritage and has been used in Norway for clothing for over 6000 years. In more recent centuries wool has been used for knitting, weaving, and felting, and it is the most used raw material in our national folk costumes. Advanced multicolour patterns were hand knitted and decked with beautiful woven bands and pewter clasps. You will find all of these elements in the patterns used in Norlender's knitwear. Our knitwear range is always inspired by our traditions, history and our spectacular nature, made into beautiful garments, suitable for the modern men, women and children.

## OUR WOOL

Norway is known internationally for the high quality of its woollen clothing. To stay warm in the cold and often wet climate of the north has been a key factor for survival, and wool is a natural fiber with the extraordinary properties to do just that. Norwegian wool has long and strong fibers with high thermal rating, a product of the natural evolution of our hardy Norwegian sheep. We use Norwegian wool in over 70% of our knitwear range while the remaining garments in finer gauges use European yarns. 100% Merino wool is used in a selection of styles where a soft and luxurious handle is required.

Norlender always uses high quality yarns and we cooperate with skilled spinners in Norway and Europe. The Norwegian spinners, Sandnes Garn is our main supplier of high quality Norwegian yarns. This is a company with a history of more than 130 years in the wool industry and someone we rely on for their expertise on Norwegian wool. Hillesvåg Ullvarefabrikk is a family business with a history that dates back over a hundred years. Located across the fjord from us in the beautiful Osterfjord on the west-coast of Norway, they are our supplier on exclusive yarns, like the rare Norwegian Fur Sheep.

Scholler Wool, Zegna Baruffa and Transilana are our European spinners who supply us with high quality pure new wool and merino yarns. For specially custom made yarns we collaborate with Transilana.

## SUSTAINABILITY

At Norlender we feel privileged to work with a natural and sustainable fibre such as wool. Our spinners follow strict eco guidelines within their production and procurement chain. Norlender is, together with its partners, working towards producing environmentally friendly knitwear.

Graphic design: OK Kontor  
Photographer: Isak Okkenhaug  
& Marielle Evjen

Copyright Norlender Knitwear  
[www.norlender.no](http://www.norlender.no)



## Women's Collections

# Kristin



Kristin is a sporty and light weight half zipped sweater with a decorative snow crystal motif. This sweater is made of a fine merino yarn and has a soft ribbed collar.

**MODEL 335**  
 COL 1 WHITE / BLUE  
 COL 3 RED / WHITE  
 COL 14 NAVY / WHITE

XS – XXL  
 12 GG. Tubular knitted jacquard  
 Yarn 100% fine merino wool

# Amalie



Amalie is a sporty light weight sweater knitted of 100% fine merino wool. The subtle pattern around the chest and sleeves makes gives the sweater a modern look.

**MODEL 333**  
 COL 3 RED / WHITE  
 COL 10 GREY / WHITE

XS – XXL  
 7 GG Single bed jacquard  
 Yarn 100% fine merino wool

# Eline



In our Eline jacket we want to emphasize the beauty of the Selbu pattern, which is one of the best known and most loved symbol in traditional Norwegian hand knitting design. Eline is made of 100% fine merino wool.

**MODEL 615**  
COL 3 RED / BLACK  
COL 4 BLACK / WHITE

XS – XXL  
7 GG. Double knitted jacquard  
Yarn 100% fine merino wool

# Frøya



Frøya is inspired by the beautiful carved ornaments from the Viking era. The mono coloured side panels makes a beautiful slimming silhouette. This jacket is made from a fine merino yarn.

**MODEL 634**  
COL 4 BLACK / WHITE  
COL 17 BEIGE / WHITE

XS – XXL  
7GG. Single bed jacquard  
Yarn 100% fine merino wool

# Alvilde



Alvilde is a long stylish jacket with a check pattern in combination with traditional Norwegian details. The jacket has two front pockets and an A-line silhouette which suits all body shapes.

**MODEL 662**  
COL 4 BLACK / WHITE  
COL 11 GREY / WHITE

XS – XXL  
12 GG tubular knitted jacquard  
Yarn: 50% wool, 50% acrylic 2 end worsted yarn

# Edel



Edel is a long fitted jacket with zippered pockets. The minimalistic design makes this jacket into a versatile garment easily combined with both trousers, skirts or dresses. Shown with skirt mod 444.

**MODEL 661**  
COL 4 BLACK  
COL 10 GREY

XS – XXL  
12 GG. Double knitted jacquard  
Yarn: 50% wool/50% acrylic. 2 end worsted yarn

# Helga

An elegant skirt with lining, knitted in a ripple effect. Matching model 660, 661 and 662.

**MODEL 444**  
COL 4 BLACK  
COL 10 GREY



S – XL  
12GG. Double knit with wave knitting structure  
Yarn: 50% wool / 50% acrylic. 2 end worsted yarn

# Sonja



Sonja is inspired by traditional Norwegian patterns with details taken from both *Rosemaling* and our traditional folk costumes. The zipped jacket has front pockets and decorative buttons at the front and on the cuffs.

**MODEL 632**

COL 1 WHITE / BLUE  
COL 4 BLACK / GREY

XS – XXL  
7 GG. Single bed jacquard with rib backing  
Yarn: 2 end worsted 100% wool

# Maud



Maud is a light weight zipper cardigan with a design inspired by traditional Norwegian filigree brooches used in our national costumes. These decorative details together with the buttons at the front and on the cuffs makes this a stylish garment for many occasions.

**MODEL 629**

COL 2 OFF-WHITE / GREY  
COL 9 CHARCOAL / WHITE

XS – XXL  
7 GG. Single bed jacquard with rib backing  
Yarn: 2 end worsted 100% wool

# Ingrid



Ingrid is an elegant cardigan with a button opening and front pockets. The slimming pattern is inspired by the Norwegian spring with its floral details. Both the collar, the hem of the jacket and the sleeves are trimmed with beautiful scalloped edges.

**MODEL 647**  
COL 10 GREY / WHITE  
COL 16 LIME / WHITE

XS – XXL  
5 GG. Singlebed Jacquard with intasia technique  
Yarn: 3-end worsted 100% wool

# Sofie



We have revived grandmothers favourite knitted cardigan and made it into a modern design for the women of today. The garment is light weight and comfortable and an all year around favourite.

**MODEL 637**  
COL 1 WHITE / GREY  
COL 14 NAVY / BLUE

XS – XXL  
7 GG. Single bed jacquard with rib backing  
Yarn: 2 end worsted 100% wool



## Åse



Norlender's Åse cardigan is a modern version of the traditional Lusekofte. The jacket has traditional woven bands along the zipped opening.

**MODEL 636**  
COL 11 GREY / WHITE  
COL 12 BLUE / WHITE

XS – XXL  
7GG. Single bed jacquard with rib backing  
Yarn: 2 end worsted 100% wool

## Voss



Voss is a contemporary Norwegian "lusekofte", a cardigan with traditional patterns, pewter clasps and woven bands. The cardigan has a fleece lined collar.

**MODEL 640**  
COL 3 RED / BLACK  
COL 10 GREY / WHITE  
COL 17 BEIGE / WHITE

XS – XXL  
5 GG. Single bed jacquard  
Yarn: 3 end worsted 100% wool

# Lea



Lea's snow crystal pattern is inspired by the Norwegian winter. This light weight zippered cardigan is made of a soft merino yarn.

**MODEL 633**  
COL 11 GREY / WHITE  
COL 13 GREEN / BLACK

XS – XXL  
12 GG. Tubular knitted jacquard  
Yarn 100% fine merino wool

# Birgit



Birgit is an elegant and practical poncho with a Norwegian pattern on the collar and wooden toggles at the front opening.

**MODEL 605**  
COL 4 BLACK / GREY  
COL 14 NAVY / WHITE

ONE SIZE  
5 GG. Single bed structural knit  
Yarn: 3-end worsted 100% wool

# Janne



# Agnes



Janne is a lightly felted wool jacket, with hand embroidery on sleeves and collar. The jacket has pretty details and a flattering silhouette.

Agnes is a ladies jacket with zipped opening and pockets. It has a light and delicate quality, with elegant ribbed knitting structure at bottom of body and sleeves.

## MODEL 603

COL 3 RED  
COL 9 CHARCOAL  
S - L  
12 GG. Single bed knit, felted  
Yarn: : 2 end worsted 100% wool

## MODEL 660

COL 4 BLACK  
S - XL  
12 GG tubular jacquard  
Yarn: 50% wool, 50% acrylic 2 end worsted yarn



## Sweaters & Men's Collections

# Osterøy



Osterøy is a classical crew neck pullover with a traditional Norwegian pattern. The sweater is named after the Island where the Norlender factory is situated.

**MODEL 341**  
COL 2 OFF-WHITE / CHARCOAL  
COL 14 NAVY / WHITE

S – XXL  
5 GG single bed jacquard  
Yarn: 3 end worsted 100% wool

# Hamar



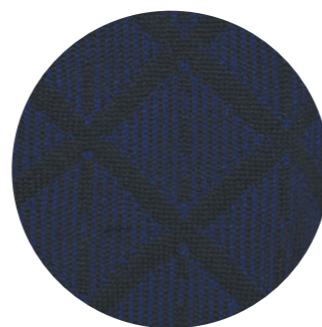
A design inspired by the traditional Norwegian costumes worn by Norwegians for many centuries and now made into a contemporary sweater for men. A light weight and comfortable garment with a zip opening and fleece lined collar.

**MODEL 319**  
COL 2 OFF-WHITE / CHARCOAL  
COL 14 NAVY / WHITE

S – XXL  
7 GG single bed jacquard  
Yarn: 2 end worsted 100% wool

# Lofoten

# Oslo



The Norwegian Fur Wool sheep (*Norsk Pelssau*) is an old and rare breed, only found in Norway. Yarn made from this wool offers a soft, strong and mohair-like quality. Our Lofoten sweater is produced of Norwegian fur wool made exclusively at Hillesvåg Ullvarefabrikk.

Oslo is a classic lined bomber jacket with pockets. It has a sporty look, and is a timeless jacket for men of all ages.

**MODEL 320**  
COL 5 BURGUNDY / GREY  
COL 14 NAVY / GREY  
COL 15 CAMEL / GREY

S – XXL  
5 GG single bed jacquard with structural knit  
Yarn: 2-end carded 100% wool from Norwegian fur sheep

**MODEL 675**  
COL 4 BLACK / NAVY

S – XXL  
7 GG single bed jacquard. Polyester lining  
Yarn: 2 – end worsted 100% wool

# Narvik



Narvik is the perfect Norwegian skiing sweater, with a half zip opening and a fleece collar. The bold star at the front is a typical symbol of the long Nordic winters.

**MODEL 312**  
COL 9 CHARCOAL / WHITE  
COL 12 BLUE / WHITE

S – XXL  
5 GG single bed jacquard  
Yarn: 3 end worsted 100% wool

# Setesdal



One of the best known knitting designs from Norway has its origin in Setesdal, a valley in Norway with strong hand craft traditions. Our design Setesdal is based on the traditional patterns from this region, made into a contemporary sweater suitable for both men and women. The garment is made of a fine and comfortable merino yarn.

**MODEL 338**  
COL 1 WHITE / NAVY  
COL 14 NAVY / WHITE

XS – XXL  
7 GG single bed jacquard  
Yarn 100% fine merino wool

# Stalheim

# Nusfjord



Our Stalheim design is inspired by decorative patterns from the Viking era. It is a comfortable and lightweight buttoned cardigan with horizontal patterns across the chest.

Nusfjord is a classical and elegant men's cardigan with zip opening and a Norwegian pattern across the front and back. The garment is light weight and perfect for indoor and outdoor activities.

**MODEL 673**  
COL 11 DARK GREY / WHITE  
COL 14 NAVY / WHITE

S – XXL  
7 GG single bed jacquard  
Yarn: 2 end worsted 100% wool

**MODEL 677**  
COL 9 CHARCOAL / WHITE  
COL 14 NAVY / WHITE

S – XXL  
7 GG double knitted jacquard  
Yarn: 2 end worsted 100% wool

# Stavern



Stavern is the perfect garment for spring and fall. The design is inspired by our rich Viking heritage and rural patterns from the middle ages.

**MODEL 610**  
COL 9 CHARCOAL / GREY  
COL 10 GREY / DARK GREY

S – XXL  
7 GG single bed jacquard  
Yarn: 2 end worsted 100% wool

# Stavanger



With its woven band and pewter clasps Stavanger has all the hallmarks of traditional Norwegian knitwear. This is a stylish cardigan produced in classical solid colours, and is suitable for both casual and formal occasions.

**MODEL 644**  
COL 4 BLACK / WHITE  
COL 11 DARK GREY / WHITE

S – XXL  
5 GG single bed jacquard  
Yarn: 3 end worsted 100% wool



# Spitzbergen



On Spitzbergen, the polar bear is the uncrowned king. Our Spitzbergen design has a stylized polar bear pattern on both sleeves, combined with a classical Norwegian snowflake pattern. The pullover has elegant leather trims and a fleece lined collar.

## MODEL 366

COL 2 OFF-WHITE / CAMEL  
COL 14 NAVY / WHITE

S – XXL  
5 GG single bed jacquard with cable structural knit  
Yarn: 3 end worsted 100% wool

# Vega



Vega is a classical crew neck sweater with a design reminiscent of pullovers popular in Norway in the early 19th century. At that time hand-knitted sweaters and cardigans were the main garments worn during the cold season. With Vega, we wish to revisit memories of our Norwegian heritage and craftsmanship.

## MODEL 342

COL 3 RED / WHITE  
COL 14 NAVY / WHITE

S – XXL  
5 GG single bed jacquard  
Yarn: 3 end worsted 100% wool

# Reykjavík



Reykjavík is a new addition to our popular range of fishermen's sweaters, offering a softer and lighter alternative. These garments are characterized by their small geometric designs and often finished with decorative stripes on ribs and collars.

**MODEL 351**  
COL 9 CHARCOAL / OFF-WHITE  
COL 14 NAVY / GREY

S – XXL  
5 GG single bed jacquard  
Yarn: 2 end worsted 100% norwegian wool

# Hammerfest



Hammerfest is inspired by the traditional Norwegian fishermen pullovers and has a double sided knitted structure. Hammerfest is the perfect choice for all outdoor activities.

**MODEL 350**  
COL 9 CHARCOAL / BURGUNDY  
COL 14 NAVY / BURGUNDY  
COL 15 CAMEL / GREEN  
COL 5 BURGUNDY / GREY

S – XXL  
5 GG double knitted jacquard  
Yarn: 2 end worsted 100% norwegian wool

# Svalbard



Svalbard is one of our original fisherman pullovers. This garment is based on the handknitted garments our fishermen wore to combat the cold and wet climate along the coast. Svalbard has an exclusive knitted structure which makes it perfect for outdoor activities.

**MODEL 379**  
COL 14 NAVY / WHITE

S – XXL  
5 GG single bed jacquard  
Yarn: 1 end-carded from 100% norwegian wool

# Island



The fisherman sweater has been used along the coast of Scandinavia for centuries. The rough weather in these coastal areas has taught the population to utilize the natural thermal properties of the wool. At Norlender we still produce our fishermen range from the same unique Norwegian wool to create a strong and nearly everlasting product.

**MODEL 378**  
COL 2 OFF-WHITE / CHARCOAL  
COL 14 NAVY / OFFWHITE

S – XXL  
5 GG single bed jacquard  
Yarn: 1 end-carded from 100% norwegian wool

“Today Norlender Knitwear is one of the few remaining textile factories in Norway, and we are very proud to be able to offer garments made of 100% Norwegian wool, knitted and manufactured at our factory in Hosanger”



## Childrens's Collections

# Tyrihans



# Stjerne



The reindeer has always been a beloved motif in the traditional Norwegian knitwear. In Tyrihans we have used it in combination with other traditional elements and the design comes with matching hats and mittens in size 3-6 years.

**MODEL 552**  
COL 12 BLUE / WHITE  
COL 19 PINK / WHITE

Size 1, 2, 4, 6, 8 YEARS  
5GG single bed jacquard  
Yarn: 3 end worsted  
100% wool

A beautiful soft childrens cardigan inspired by the traditional Norwegian "lusekofte" Model Stjerne has a zipped opening and comes in size 0 to 4 years old with matching hats and mittens in two sizes.

**MODEL 557**  
COL 10 GREY / WHITE  
COL 21 CERISE / WHITE

SIZES 0, 1, 2, 3, 4 YEARS  
5GG single bed jacquard  
Yarn: 3 end worsted 100% wool

**MODEL 252**  
Hat with reindeer motif  
3 – 6 YEARS



**MODEL 253**  
Mittens with reindeer motif  
3 – 6 YEARS



**MODEL 254**  
Slippers with soft lining  
SIZE 2 – 4, 6 – 8 YEARS



COL 12 BLUE / WHITE  
COL 19 PINK / WHITE

100% Merino wool  
Quality: 5 GG. Double  
knitted jacquard  
Yarn: 3 layer 100%  
combed wool yarn



**MODEL 257**  
HAT

**MODEL 258**  
MITTENS

COL 10 GREY / WHITE  
COL 21 CERISE / WHITE

SIZE 1 – 2 YEARS, SIZE 3 – 4 YEARS  
5GG single bed jacquard.  
Yarn: 3 end worsted 100% wool.  
Lining: fleece.



# Smørbukk



Smørbukk is the kid's version of Norlender's Island fishermans sweater. Made for children in a soft and comfortable wool with a tough image.

**MODEL 563**  
COL 2 OFF-WHITE / CHARCOAL

SIZES 2, 4, 6, 8 YEARS  
5GG single bed jacquard  
Yarn: 2 end worsted 100% wool

# Kvitebjørn



Kvitebjørn is inspired from the majestic polar bears living on Svalbard and has a polar bear pattern back and front. This is a light weight sweater with a practical half zip opening.

**MODEL 560**  
COL 3 RED / WHITE  
COL 12 BLUE / WHITE

SIZE 2, 4, 6, 8, 10 YEARS  
7GG single bed with the jacquard pattern  
knitted with rib backing  
Yarn: 2 end worsted 100% wool

# Askeladden

**MODEL 561**  
COL 14 NAVY / WHITE  
COL 19 PINK / WHITE

SIZE 2, 4, 6, 8 YEARS  
7GG single bed jacquard  
Yarn: 2 end worsted 100% wool.



Askeladden has a traditional raglan shape and a retro design. The garment is specially treated to make the sweater super soft and very comfortable.

# Fanafjellet



Fanafjellet is inspired by the original "Fana" pattern. The jacket has a zip opening, large front pockets and a practical hood. Fanafjellet comes with matching hats and mittens in two sizes and scarf in one size.

**MODEL 559**  
COL 10 GREY / WHITE  
COL 14 NAVY / WHITE

SIZE 1, 2, 4, 6, 8 YEARS  
5GG single bed jacquard  
Yarn: 3 end worsted 100% wool

**MODEL 255**  
GLOVES  
SIZE 1 - 3 & 4 - 8 YEARS

**MODEL 259**  
HAT  
SIZE 1 - 3 & 4 - 8 YEARS

**MODEL 260**  
SCARF



5GG single bed jacquard  
Yarn: 3 end worsted  
100% wool  
Lining hat & gloves: fleece

COL 10 GREY / WHITE  
COL 14 NAVY / WHITE



## Accessories

# Rose Set



Classic ladies beret, scarf and wristwarmer with a Norwegian pattern. The set is made of a soft merino yarn.

**MODEL 226**  
HAT

**MODEL 227**  
SCARF

**MODEL 228**  
WRISTWARMER

COL 4 BLACK / GREY

ONE SIZE  
10 GG tubular knitted jacquard.  
Yarn: 100% fine merino wool



# Snowflake Set

## MODEL 401

HAT  
COL 1 WHITE / BLUE  
COL 3 RED / WHITE  
COL 4 BLACK / WHITE  
COL 9 GREY / WHITE



7 GG tubular knitted jacquard  
YARN: 2 end worsted 100% wool

## MODEL 402

HEADBAND  
COL 1 WHITE / BLUE  
COL 3 RED / WHITE  
COL 4 BLACK / WHITE  
COL 9 GREY / WHITE



7 GG tubular knitted jacquard  
YARN: 2 end worsted 100% wool

## MODEL 403

GLOVES  
COL 1 WHITE / BLUE  
COL 3 RED / WHITE  
COL 4 BLACK / WHITE  
COL 9 GREY / WHITE



7 GG tubular knitted jacquard  
YARN: 2 end worsted 100% wool

## MODEL 404

SCARF  
COL 1 WHITE / BLUE  
COL 3 RED / WHITE  
COL 4 BLACK / WHITE  
COL 9 GREY / WHITE



7 GG tubular knitted jacquard  
YARN: 2 end worsted 100% wool

## MODEL 405

MITTENS  
COL 9 GREY / WHITE  
COL 3 RED / WHITE



7 GG tubular knitted jacquard  
YARN: 2 end worsted 100% wool



# Multi Set



Model 244 can be used as hat, headband or neck warmer.

**MODEL 244**  
MULTIHAT

COL 4 BLACK / WHITE  
COL 1 WHITE / NAVY

**MODEL 246**  
WRISTWARMER

ONE SIZE  
7 GG tubular knitted jacquard  
Yarn: 100% fine merino wool

# Crystal Set

**MODEL 292**  
SCARF

**MODEL 293**  
GLOVES WITH  
WRISTWARMER

COL 1 WHITE / GREY  
COL 4 BLACK / WHITE

7 GG tubular knitted jacquard  
Yarn: 2 end worsted yarn made from 100% wool



# Urban Hats

**MODEL 284**  
WOMANS HAT

COL 10 GREY

ONE SIZE  
40% Wool  
20% Polyester  
20% Acrylic



**MODEL 285**  
WOMANS HAT

COL 3 RED  
COL 4 BLACK

ONE SIZE  
65% Wool  
35% Polyester



**MODEL 295**  
WOMANS HAT

COL 5 BURGUNDY  
COL 10 GREY

ONE SIZE  
65% Wool  
35% Polyester



**MODEL 291**  
HAT

COL 4 BLACK

SIZE 56, 58, 60 CM  
40% Wool  
60% Polyester



**MODEL 297**  
HAT

COL 9 GREY

SIZE 56, 58 CM  
40% Wool  
60% Polyester



# Lea Set

**MODEL 233**  
SCARF

**MODEL 234**  
GLOVES

COL 11 GREY / WHITE  
COL 13 GREEN / BLACK

12 GG. Tubular knitted jacquard  
Yarn: 100% fine merino wool



# Skipper's hat



**MODEL 266**  
COL 4 BLACK

SIZE 57, 59 CM  
30% Wool, 70% Polyester  
Lining: 100% Cotton

# Mountain Set



**MODEL 207**  
HEADBAND

COL 10 GREY / WHITE  
COL 14 NAVY / WHITE

**MODEL 208**  
HAT

7GG single bed jacquard  
Yarn: 3-end worsted yarn made from 100% wool  
Lining hat & headband: soft fleece.  
Lining gloves: knitted fabric from wool

**MODEL 209**  
GLOVES

# Chess Set

**MODEL 230**  
SCARF

**MODEL 231**  
HAT

COL 4 BLACK

12 GG. Tubular knitted jacquard  
Yarn: 100% fine merino wool



# Forest Set

**MODEL 239**  
HAT

**MODEL 240**  
SCARF

COL 3 RED  
COL 4 BLACK

7 GG. Tubular knitted jacquard  
Yarn: 100% fine merino wool



## NORWEGIAN AGENTS

### **Agent North-Norway**

Askeladden Agentur AS  
Mathias Lekanger  
Furukollveien 293  
1860 Trøgstad, Norway

Mobile (+47) 913 082 08  
E-Mail [mathias@lekanger.no](mailto:mathias@lekanger.no)

### **Agent South-Norway**

Kåre Nyttun  
Tvildesvingen 16 B,  
5700 Voss, Norway

Phone (+47) 565 120 00  
Mobile (+47) 911 613 63  
E-Mail [joh-nyttu@online.no](mailto:joh-nyttu@online.no)

For questions and information  
contact Norlender directly:

### **Norlender Knitwear AS**

Osterøyvegen 2184  
Hosanger  
5282 Lonevåg  
Norway

Phone (+47) 561 920 00  
Fax (+47) 561 920 01  
E-Mail [sales@norlender.no](mailto:sales@norlender.no)

## WORLDWIDE AGENTS AND DISTRIBUTERS

### **Agent Russia**

Skanttr LLC  
Saint-Petersburg, Russia

Phone (+7) (812) 414 90 03  
Mobile (+7) (911) 713 72 57  
E- Mail [sales@skantrika.ru](mailto:sales@skantrika.ru)  
[www.skantrika.ru](http://www.skantrika.ru)

### **Agent Japan**

ESPRIT UG CO.,LTD  
Tokyo Show room  
6F Kudanshita Plaza Bldg, 1-3-1,  
Kudankita, Chiyoda-ku, 102-0073,  
Tokyo, Japan

Phone (+81) 332 345 075  
Fax (+81) 332 345 057  
E-Mail [tokyo@espritug.co.jp](mailto:tokyo@espritug.co.jp)

### **Agent Czech Republic**

Michal Holy  
Norge.cz  
Nákupní 1462,  
252 42 Jesenice, Czech Republic

Mobile (+420) 776 004 659  
E- Mail [michal@norge.cz](mailto:michal@norge.cz)  
[www.norskysvetr.cz](http://www.norskysvetr.cz)

### **Distributor USA**

Scandinavian Specialties  
363117 Avenue Hudson  
WI 54016-6706, USA

Phone (+1) 71 53 77 03 33  
Fax (+1) 71 53 77 03 34  
E-Mail [info@scanspec.com](mailto:info@scanspec.com)  
[www.scanspec.com](http://www.scanspec.com)

### **Agent Finland**

Antti Tapaninen  
Oy Nordia Produkter Ab  
Helsinki Fashion House  
Mikkolantie 1 A  
00640 Helsinki, Finland

Phone (+358) 977 742 72  
Fax (+358) 977 742 75  
Mobile (+358) 400 485 594  
E-Mail [antti.tapaninen@nordiaprodukter.fi](mailto:antti.tapaninen@nordiaprodukter.fi)  
[www.lankamaailma.fi](http://www.lankamaailma.fi)

### **Germany, Austria & Switzerland**

Ulrik Stephansen  
Agentur Stephansen  
Nesselwanger Straße 30  
90455 Nürnberg

Phone: +49 (0) 1 72 – 8 60 13 96  
Fax: +49 (0) 9 11 – 88 47 97  
E-mail: [agentur.stephansen@t-online.de](mailto:agentur.stephansen@t-online.de)



**FOLLOW US ON FACEBOOK & INSTAGRAM @NORLENDER**

**WWW.NORLENDER.NO**